



FOLKESTONE & HYTHE DISTRICT
**COMMUNITY SAFETY
PARTNERSHIP**

Introduction

Cllr Jenny Hollingsbee

Deputy Leader &

Cabinet Member for Communities, Lifeline,
Area Officers & Street Homeless

FHDC Place Directorate

Ewan Green, Director of Place

- Recognising the key role community safety plays in achieving our corporate ambitions and 'place' shaping.
- Promoting the role of community safety both internally and externally.
- Planning and resourcing for future service delivery.

Folkestone & Hythe Community Safety Partnership and Unit (CSU) works together to drive multi-agency practices to achieve the best outcomes for the community.

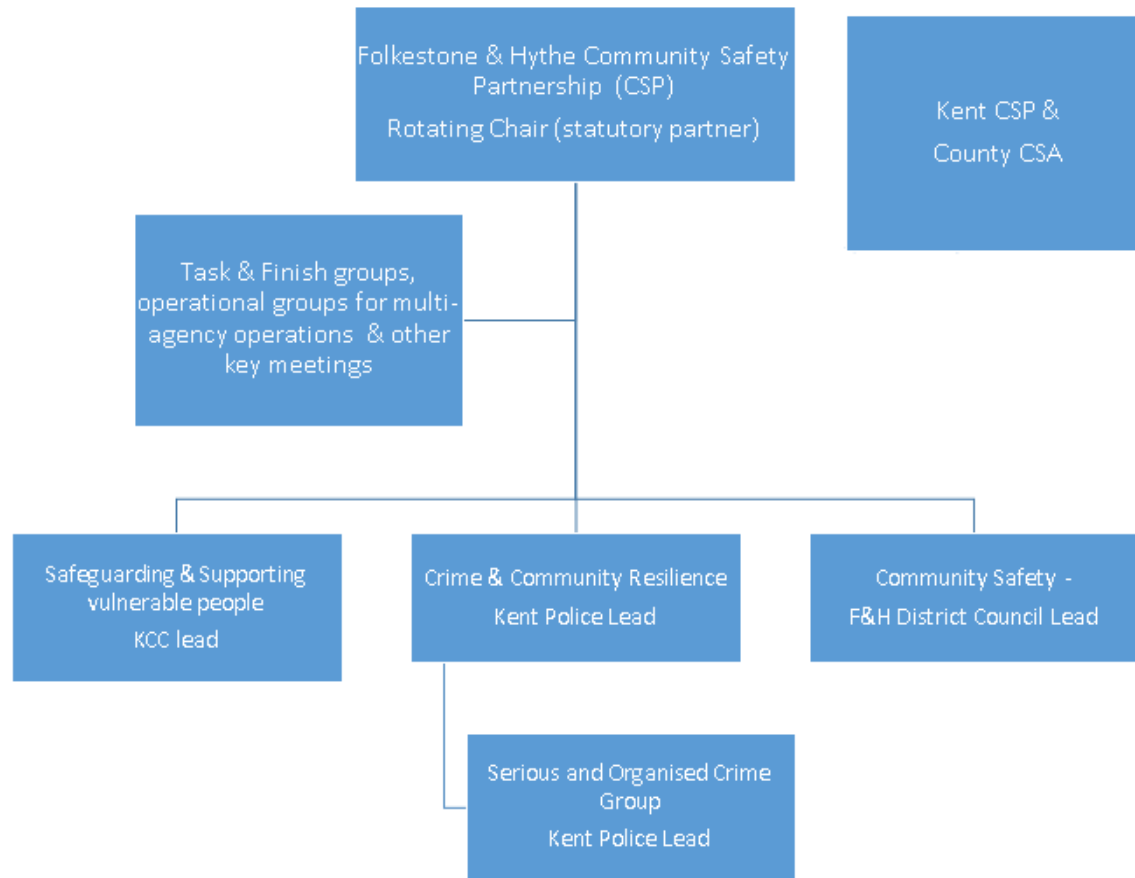
Our Community Safety Partnership consists of 6 statutory partners as well as over 25 other key agencies who form the CSU.



FOLKESTONE & HYTHE DISTRICT
COMMUNITY SAFETY
PARTNERSHIP



FOLKESTONE & HYTHE COMMUNITY SAFETY PARTNERSHIP STRUCTURE 2020



CSP Priorities 2020/21

- A Strategic Assessment is compiled annually to show progress for the Partnership against priorities, along with identification of emerging issues and recommended priorities for the next 12 months.
- The priorities for 2020/2021 for the CSP were identified taking into account the findings from the Strategic Assessment.
- A series of cross cutting themes have also been identified which are key initiatives that will support the delivery of all of the priorities

		2020/2021 Priorities		
		Safeguarding & Supporting Vulnerable People	Crime & Community resilience	Community Safety
Themes		<ul style="list-style-type: none"> • Modern Slavery & Human Trafficking • Domestic Abuse • Mental Health • Missing Children • District contextual safeguarding – Children • District vulnerabilities partnership – Adults • Youth Diversion 	<ul style="list-style-type: none"> • Modern Slavery & Human Trafficking • Cuckooing • Gangs County Lines • Criminal Exploitation • Fraud • Financial and acquisitive crime • Drug dealing • IOM/VISOR • Hate/Mate crime • Violence reduction • Serious and organised crime (SOC) • Organised crime groups (OCGs) 	<ul style="list-style-type: none"> • Anti-Social Behaviour • Public Spaces Protection Order • Environmental Crime • Town centres • Public Realm • Licensing • Events • Hotspot locations • Substance misuse • Diversionary activities • Housing • Homeless • High Risk Adults & Young People • Unauthorised Encampments
	Cross Cutting Themes	Violence Reduction		Reducing Offending

POLICE & CRIME COMMISSIONER FUNDED PROJECTS 2020/2021

The CSP received £31,744 for financial year 2020 - 2021. Funding is pass-ported through the Police and Crime Commissioner's budget. This funding is being used for a number of partnership projects as listed below to help address the CSPs priorities.

To summarise, the grant is approved currently to the total of £24,225.00 which leaves a tactical pot of £7,518.85 for reactive spend throughout the rest of 2020/2021

Project Title	Organisation	CSP Priority	PCC Priority
One Stop Shop	Homestart	Safeguarding and Supporting Vulnerable People	Support Victims of Crime and abuse
Youth Safeguarding Bi-Annual Conference	F&H Community Safety Partnership - CSU	Crime & Community Resilience Safeguarding and Supporting Vulnerable People Community Safety Violence reduction and reoffending	Tackle abuse, exploitation, violence, organised crime and gangs
Kent CDAP	Community Domestic Abuse Programme (CDAP)	Safeguarding & Supporting Vulnerable People	Invest in schemes that make offenders pay for the harm they have caused.
OP Ring bell	Folkestone & Hythe CSP Crime and Community Resilience sub group	Crime and Community Resilience Community Safety	Fight crime, ASB & reduce re-offending
Urban Pastors	Cheriton Baptist Church	Safeguarding & Supporting vulnerable people Crime and Community Resilience Community Safety Violence reduction and re-offending	Invest in schemes that make communities feel safer and support the engagement of residents
Shepway Youth Hub	Folkestone Detached Youth Project	Safeguarding & Supporting vulnerable people Crime and Community Resilience Community Safety Violence reduction and re-offending	Tackle abuse, exploitation, violence, organised crime and gangs
Homestart DA Service	Children & Me	Safeguarding and Supporting Vulnerable People	Support victims of crime and abuse
Aspire Outreach	Global Generation Church	Safeguarding & Supporting vulnerable people	Support initiatives that reduce pressure on policing due to mental health

Community Safety Sub-Group Overview



Crime and Community Resilience Sub-Group

Kent Police - Inspector Andy Brittenden



Kent Police

Violence Reduction Co-Ordinator

Kent Police –Caley Walden



Safeguarding and Supporting Vulnerable People Sub-Group

KCC - Rebekah Button



Modern Slavery & Human Trafficking

Young Person's Community Safety Conference

Domestic Abuse Strategy and Action Plan

Being creative online

District contextual safeguarding – Children

Youth Diversion

District vulnerabilities partnership – Adults

Toxic Trio Production

Safeguarding Adult Awareness

Domestic Abuse

Mental Health

Missing Children



Proposed 3 Year Plan

- 3 year plans are used by many other LA's.
- Benefits of a 3 year plan include:
 - stronger links to corporate priorities...taking a longer term approach.
 - more effective planning and resourcing.
 - better overall outcomes from projects and interventions.
 - focus on measuring success and continuous improvement.
- It is proposed that the CSP move to a 3 year planning cycle (with an annual review).
- This would begin with a new 3 year plan for 2021 - 2024.

Committee Feedback

As part of the Committee's considerations it would helpful to have feedback on:

- Current Priorities
- Proposal for a 3 year plan